



**The Business of Music  
Music & Tech Conference & Showcase Festival  
October 13-16, 2026**



**Arlo**  
Williamsburg

**Venue Event Spaces**

96 WYTHE AVE. BROOKLYN, NY

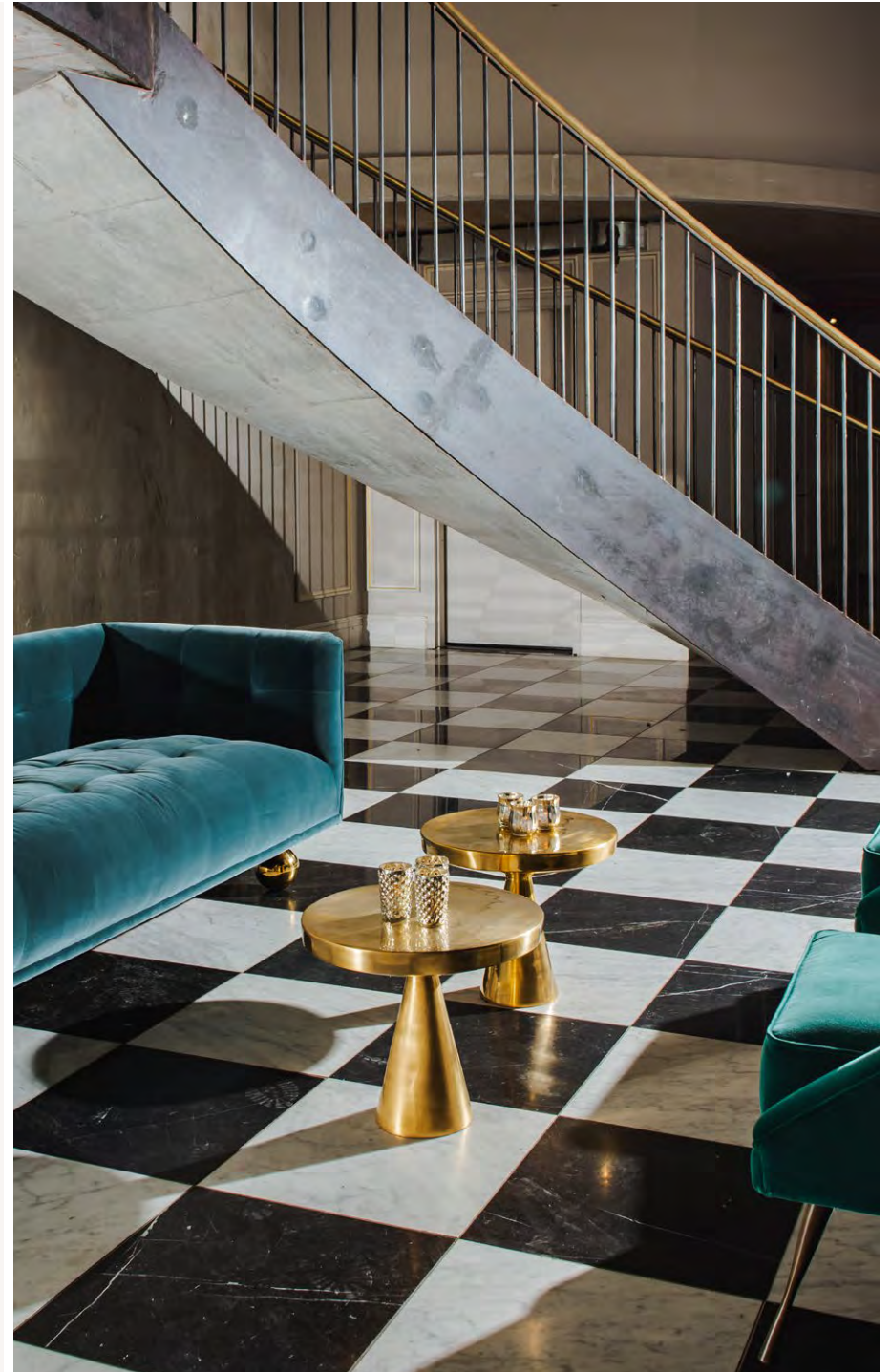


THE BALLROOM

## The Ballroom

The ballroom is Arlo Williamsburg Hotel's largest and most versatile space. Rich in character and luxury with 30-foot-tall soaring ceilings, chandeliers, sweeping staircases and parquet & marble floors. The Ballroom is a stately event space with shine and swagger.

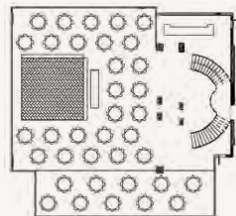
6,500 SQ. FEET



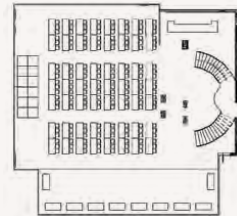




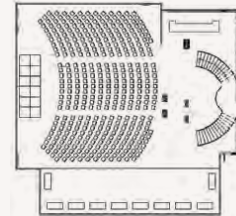
## Ballroom Configurations



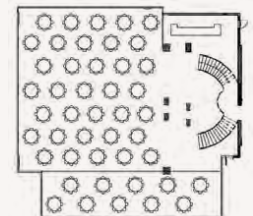
**DINNER & DANCING**  
UP TO 300



**CLASSROOM-STYLE**  
UP TO 170



**MEETINGS, KEYNOTES**  
UP TO 400



**SEATED DINNER**  
UP TO 360





THE MIRROR BAR

## The Mirror Bar

An emerald gem tucked inside Arlo Williamsburg Hotel, The Mirror Bar features French empire crystal chandeliers hung from 17-ft. ceilings, reclaimed wood floors, luxurious velvet sofas and cool tone finishing.

This venue can accommodate up to 120 guests.

1,600 SQ. FEET

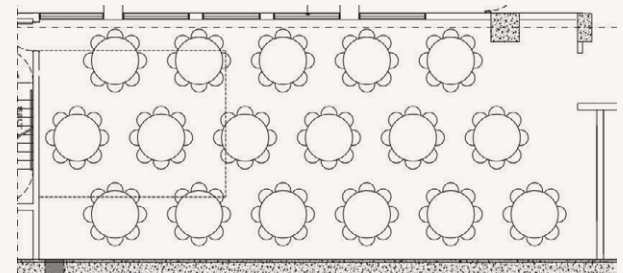




## The Mirror Bar Configurations



**UP TO 120 GUESTS FOR PRESENTATIONS  
AND MEETINGS**



**UP TO 70 GUESTS FOR  
SIT DOWN DINNER**



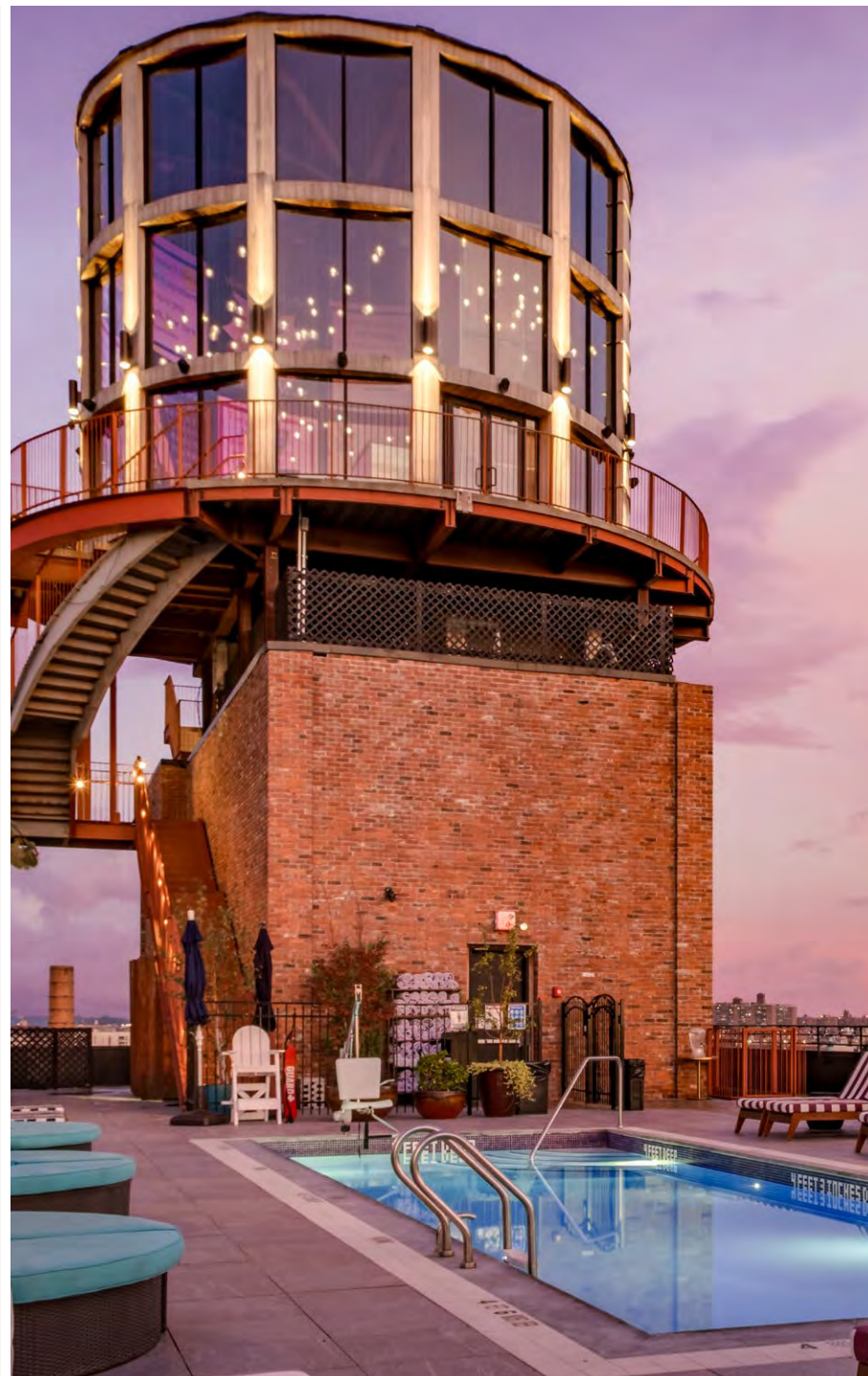


ROOFTOP

## Rooftop

The Rooftop Water Tower, pool and lounge features 360 degree views of NYC, alfresco inside and poolside dining and deliciously crafted cocktails.

10,000 SQ. FEET



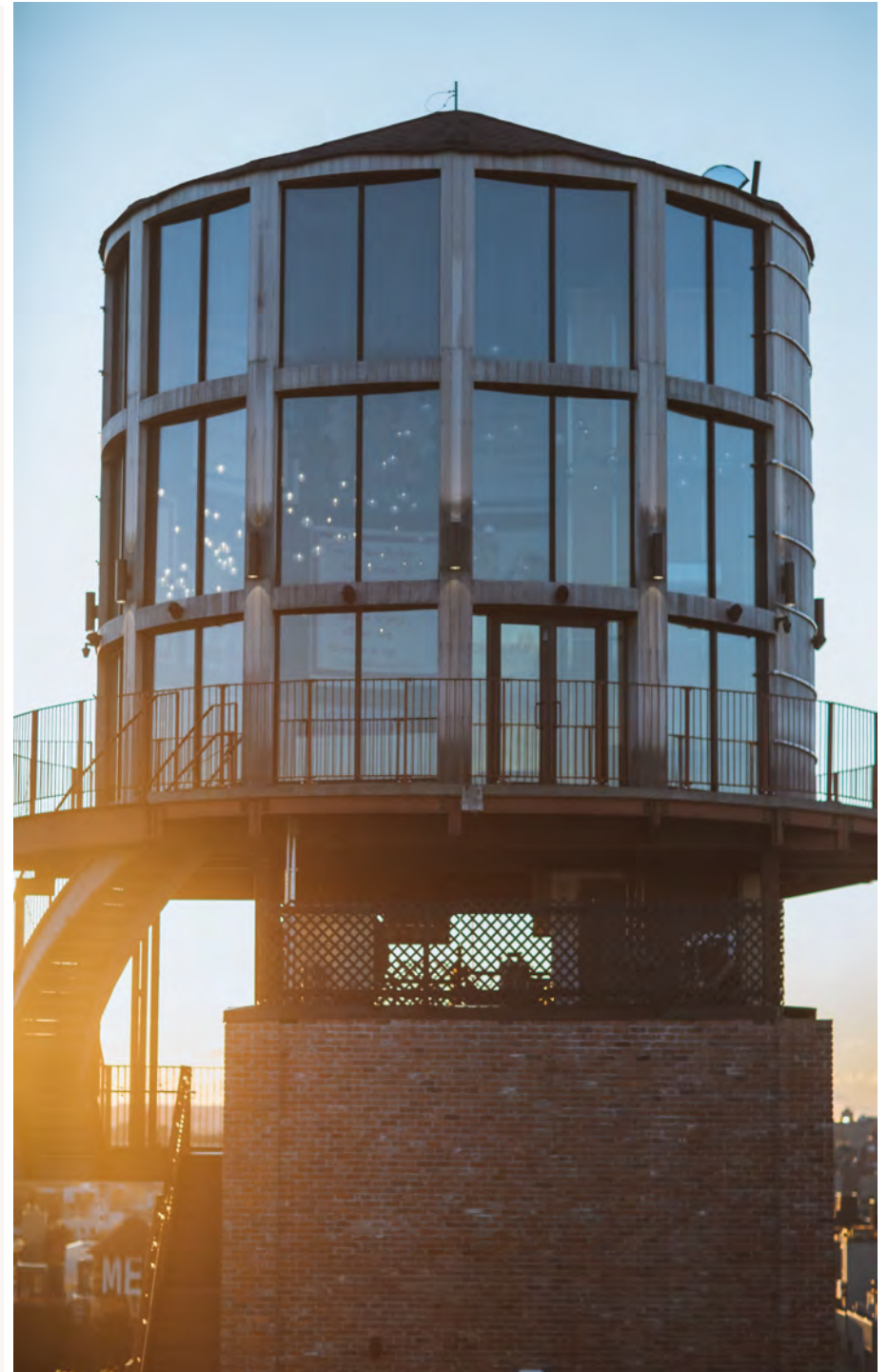


THE WATER TOWER

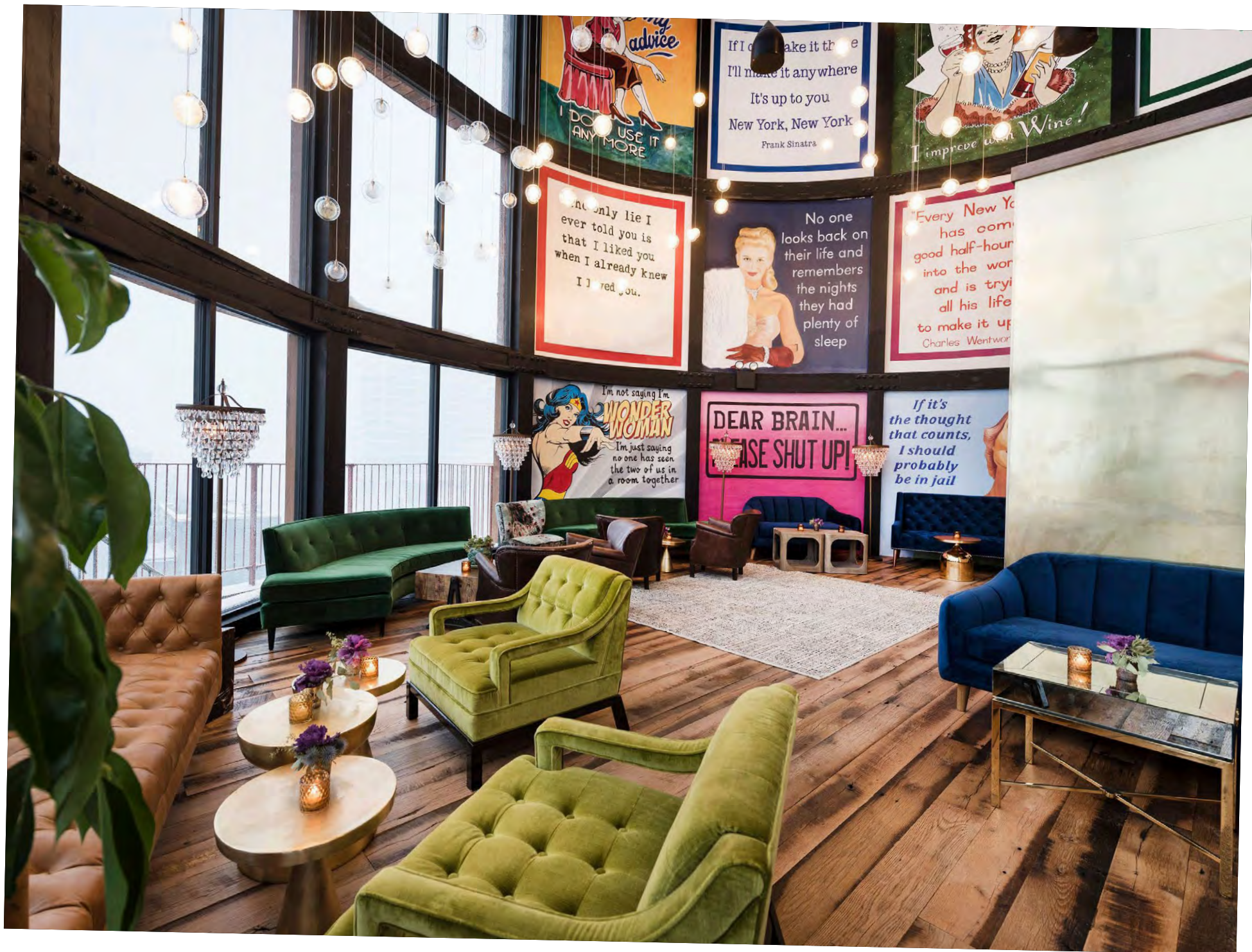
## The Water Tower

Breathtaking views of Brooklyn, the East River, and Manhattan's sparkling skyscrapers, The Water Tower is sublime for intimate private gatherings and much more. Experience this bird's-eye view and bespoke catering options.

1,500 SQ. FEET









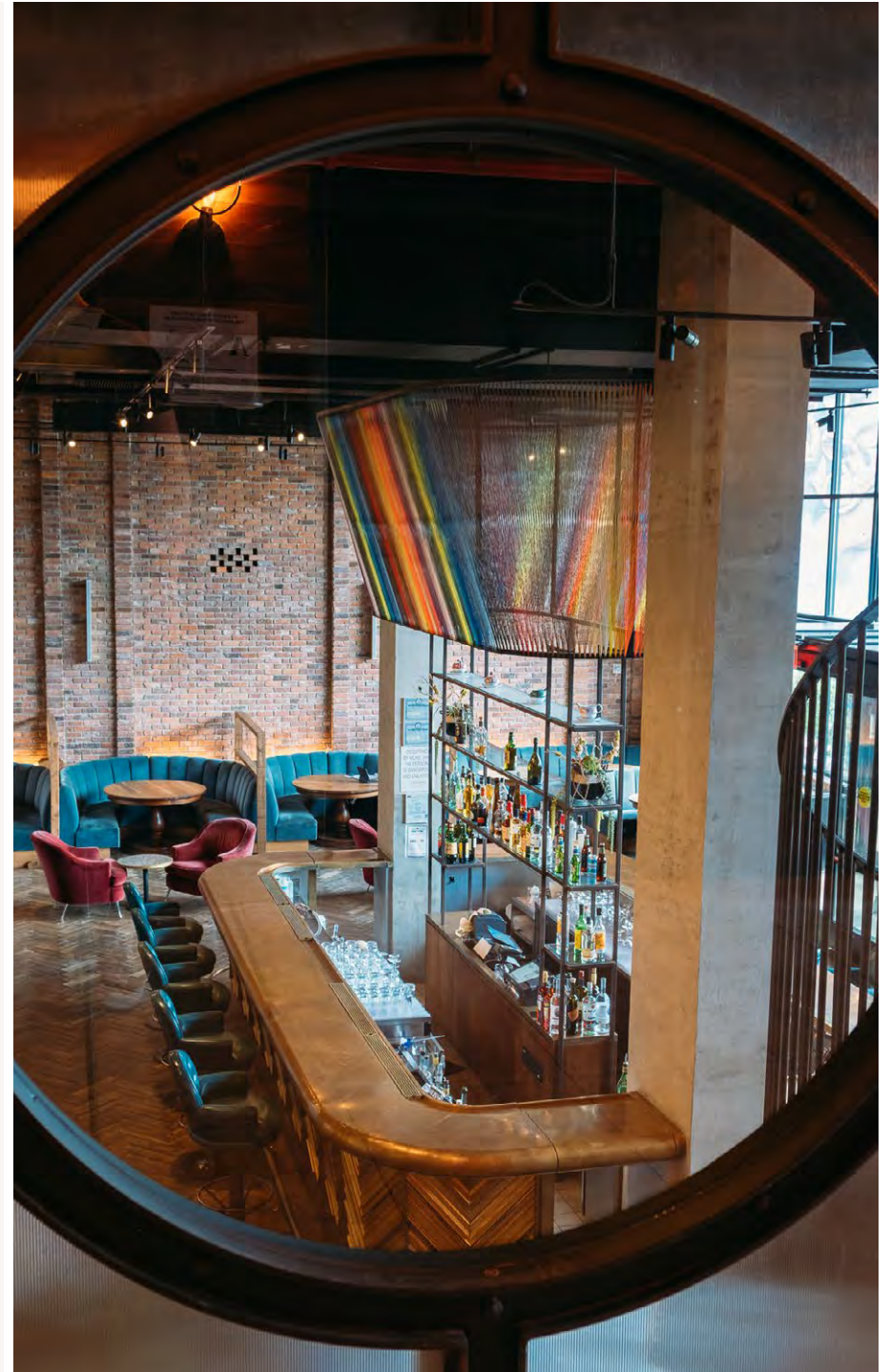




## The Lobby Bar

The hotel opens onto The Lobby Bar. The reclaimed wood floors, exposed ceiling detail and brick walls are intended to evoke the neighborhood's industrial roots. Hanging above the bar and tracing its perimeter is an installation by Eric Reiger, a local street artist. Whether seated in our lush velvet banquettes or having a cocktail at the Bar, this space can host any occasion.

3,000 SQ. FEET











CITY VIEW SUITE

## City View Suites

City View Suites are located on the west side of the Hotel, overlooking the East River. The floor to ceiling windows give an unobstructed panoramic view of the city skyline. The suite is an intimate location for meetings and private parties.

- dimensions: 49' L x 9'4" W
- floor-ceiling windows: 10'4" x 4'4"

650 SQ. FEET







**The Business of Music  
Music & Tech Conference & Showcase Festival  
October 13-16, 2026**



**Contact:**

**Bobby Haber  
[bobby@mondo.nyc](mailto:bobby@mondo.nyc)**